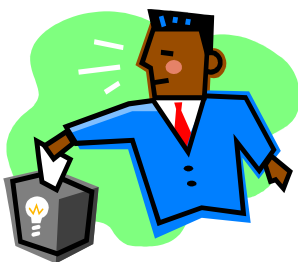


Portslade Health Centre Medical Practice

Patient Newsletter

Summer 2010

Comments Box



We have introduced a Comments Box at the Reception Desk. As well as any general comments you may wish to make about us, we would like to know what you think of recent changes we have made in the Practice, such as our new website, on-line booking and ordering of repeat prescriptions, and a message on the appointments line to let you know all the receptionists are busy, as well as more receptionists working at peak times. Please feel free to fill in one of the comment slips and let us know how we are doing.



Travel Vaccinations

If you need travel vaccinations please ensure you give us much notice as possible. If not, we cannot guarantee we will be able to fit you into our Travel Clinic.



Car Parking

Everyone agrees that parking is a problem. Unfortunately we have No room for expansion, therefore if you are able to walk or take the bus to the surgery this will obviously help the problem. if you do bring your car into the car park then please DO NOT double park as you may be blocking in a doctor or nurse who needs to move their car quickly in order to visit a patient.

EMERGENCY APPOINTMENTS

Please remember that we run a Nurse **EMERGENCY** Clinic every morning from 9.30 – 11.40am. The nurse can see patients with any of the following complaints:

- **Sore Throat**
- **Earache**
- **Flu & Persistent Cough**
- **Acute Asthma**
- **Hay Fever**
- **Trauma, Falls & Cuts**
- **Animal Bites**



- **Styes & Conjunctivitis**
- **Emergency Contraception**
- **Cystitis in Women**
- **Rashes**
- **Infected Wounds**
- **Insect Bites & Stings**
- **Diarrhoea & Vomiting**
- **Vaginal Discharge**

If your emergency can be dealt with by a nurse, please let our receptionists know so that you do not block a doctor's emergency slot that may be required for someone else.